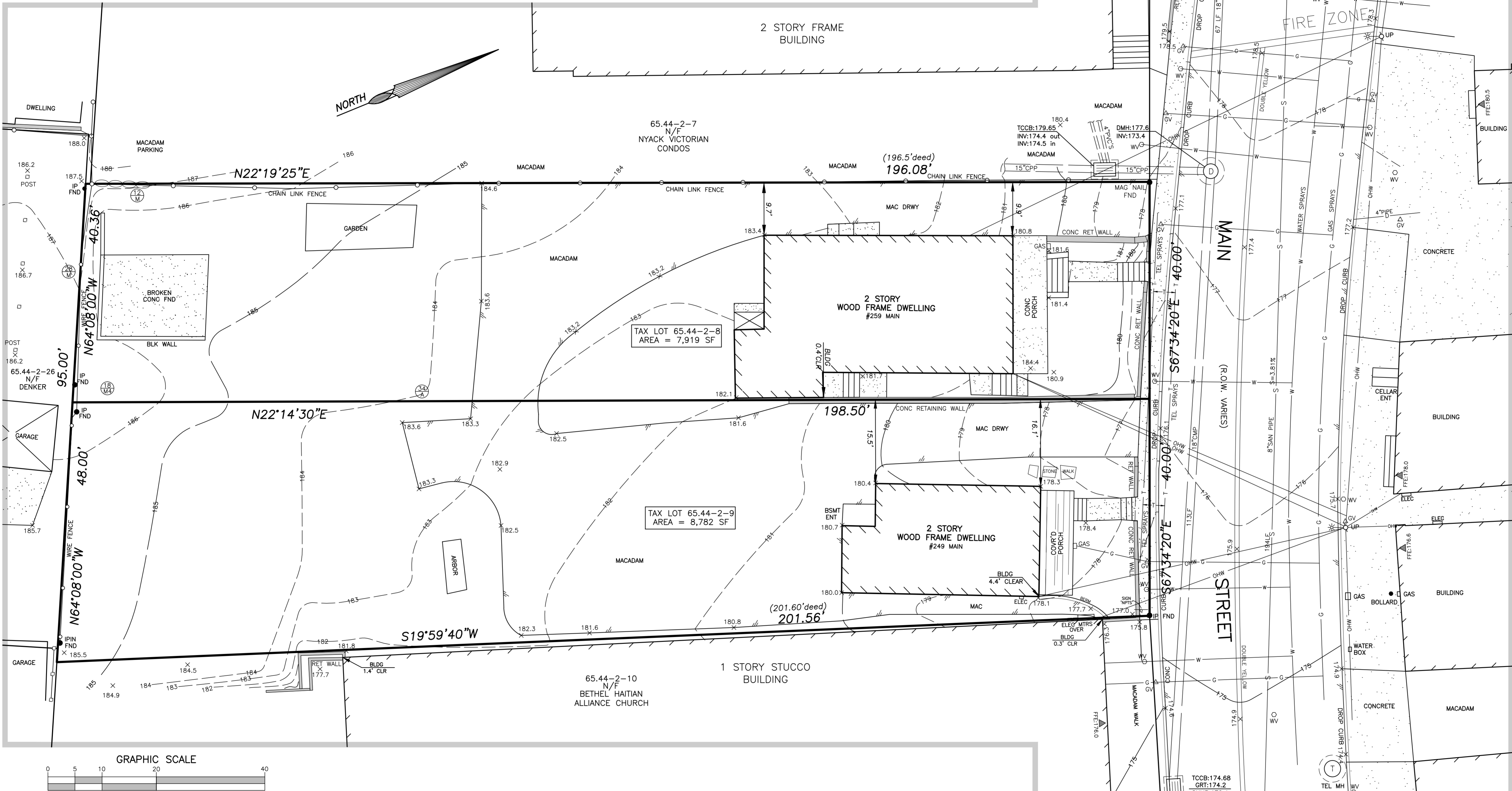


- REFERENCES:
1. DEEDS ON FILE IN THE ROCKLAND COUNTY CLERK'S OFFICE AS FOLLOWS: INST#2015-10672, INST#2015-8097, INST#2014-11349, INST#2005-10783, INST#1996-18248, INST#2001-52744, INST#2005-6577, INST#2005-11639, INST#2008-55361, INST#1999-66301, INST#1999-35900, INST#2007-20942, INST#2016-15166, INST#2013-22460, INST#2016-7064, INST#2016-9799, INST#2013-22460, INST#, INST#2015-34787, LIBER 306 PAGE 551
 2. MAP ENTITLED "MAPS OF LOTS IN THE VILLAGE OF NYACK ESTATE OF JOHN LYDECKER JR.", FILED IN THE ROCKLAND COUNTY CLERK'S OFFICE AS MAP 1666.
 3. MAP ENTITLED "SUBDIVISION ALAN FERTILE", FILED IN THE ROCKLAND COUNTY CLERK'S OFFICE AS MAP 5073.
 4. MAP ENTITLED "SUBDIVISION OF UDELSMAN PROPERTY", FILED IN THE ROCKLAND COUNTY CLERK'S OFFICE AS MAP 6165.
 5. MAP ENTITLED "LAND SURVEY FOR MISTRETTA & MARAIA", TAX LOT 65.44-2-8, PREPARED BY ROBERT E. SORACE, PLS.
 6. MAP ENTITLED "LAND SURVEY FOR MISTRETTA & MARAIA", TAX LOT 65.44-2-9, PREPARED BY ROBERT E. SORACE, PLS.
 7. MAP ENTITLED "SURVEY FOR 247 MAIN, LLC", PREPARED BY ANTHONY R. CELENTANO P.L.S.
 8. MAP ENTITLED "SURVEY OF PROPERTY FOR 'VASILY SERDSEV', PREPARED BY JOSEPH HALLER L.S.
 9. MAP ENTITLED "BOUNDARY & TOPOGRAPHIC SURVEY FOR 220 DEWEY AVENUE", PREPARED BY STEVEN COLLAZUOL L.S.
 10. MAP ENTITLED "LAND SURVEY FOR SURACE, FOTI & TRENTINELLA".
 11. MAP ENTITLED "SURVEY FOR EILEEN McKENNA & JUAN DEL VALLE, PREPARED BY ANTHONY R. CELENTANO L.S.



LEGEND

- SANITARY MANHOLE W/PIPES S SMH S
DRAINAGE INLET W/PIPES DMH
DRAIN MANHOLE/ WITH PIPES CB
CATCH BASIN FI
FIELD INLET FDC
FIRE DEPARTMENT CONNECTION CO
CLEAN OUT UP
UTILITY POLE UP
UTILITY POLE WITH LIGHT *
WATER VALVE WV
HYDRANT HYD
GAS VALVE GV
BUILDING ENTRANCE ENT
OVERHEAD WIRES OHW
EDGE OF PAVEMENT
WATER LINE W
GAS LINE G
UNDERGROUND UTILITIES UG
ELECTRIC LINE E
SIGN WITH ITEM
DROP CURB DC

TREE LEGEND

- 12 K2 SIZE IN INCHES (LARGEST DIA SHOWN IN TWIN/TRIPLE)
LETTER INDICATES TREE TYPE (SEE BELOW)
SECOND NUMBER (2), (3) INDICATES TWIN/TRIPLE
A = APPLE
M = MAPLE

TAX LOT # AS SHOWN	TOPOGRAPHIC MAP OF MISTRETTA & MARAIA	DATE	REVISIONS
AREA AS SHOWN	VILLAGE OF NYACK, TOWN OF ORANGETOWN ROCKLAND COUNTY, STATE OF NEW YORK		
FILE 21712 SURV 2019			
SCALE 1"= 10'			
DATE AUG 08, 2019	JAY A. GREENWELL, PLS, LLC		
JOB NO. 21712	SURVEYING - LAND PLANNING 85 LAFAYETTE AVENUE, SUFFERN, NEW YORK, 10901 PHONE 845-357-0830 FAX 845-357-0756		